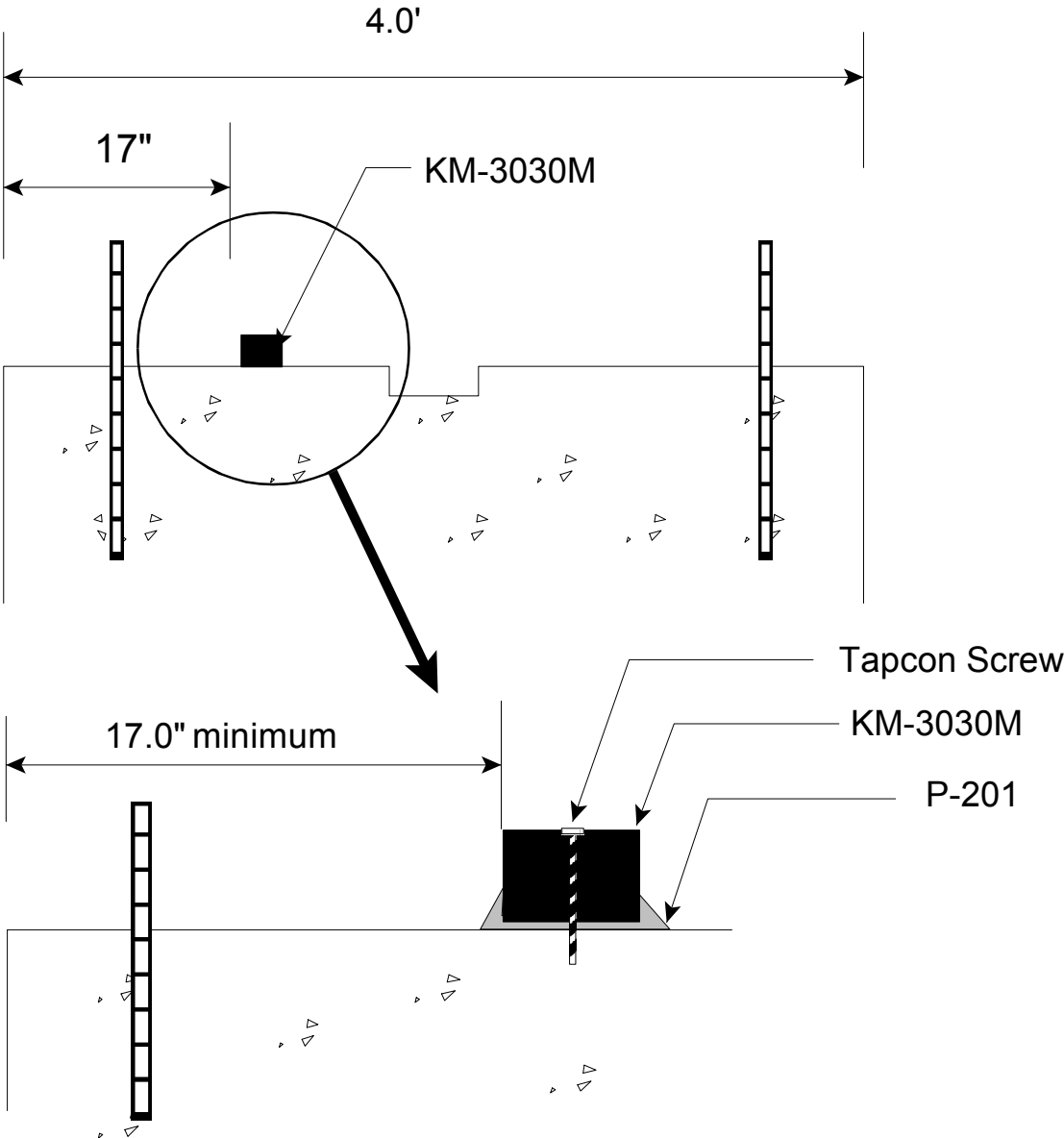


# EXAMPLE OF KM-3030M IN A CONSTRUCTION JOINT

Four foot wide concrete  
rough concrete surface  
below water level

Due to unknown concrete strength, 17" coverage is shown.  
4300" psi concrete will require only 14".

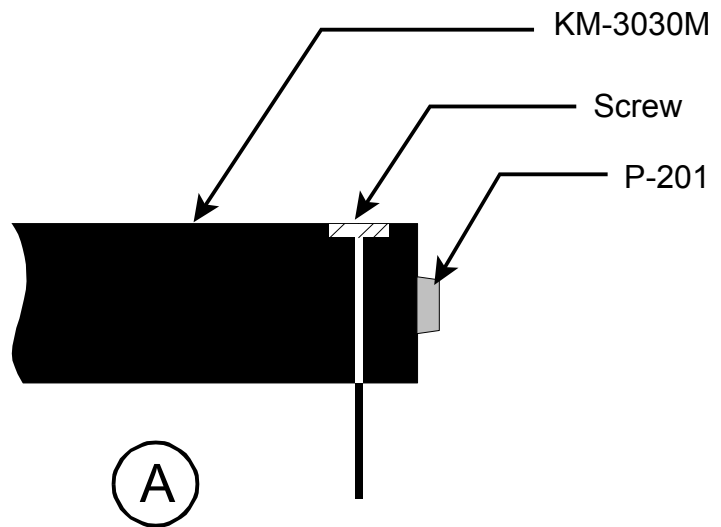


# ADEKA ULTRA SEAL KM-3030M

## SPLICING & CORNERS

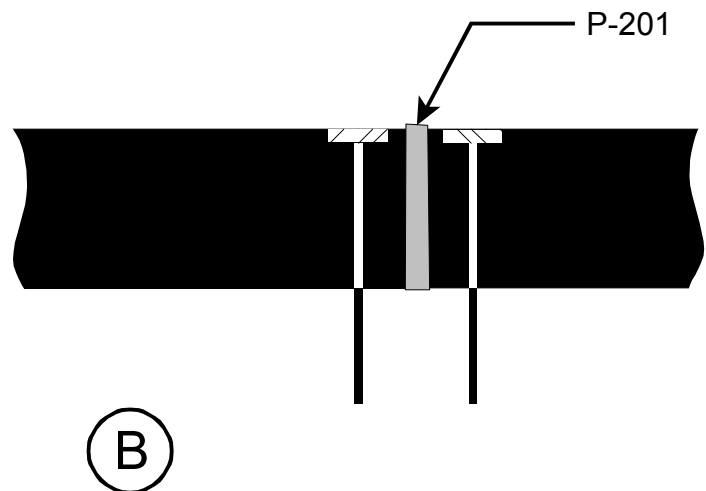
A -

1. Securely fasten segment end with a screw.
2. Apply bead of P-201 to the end as shown.



B -

1. Press the segment end of KM-3030M tightly against the first segment.
2. Fasten second segment with a screw.
3. Apply small bead of P-201 over the joint area.



C - (Corner Joint)

1. Cut square and butt joint using same procedure as splice.

