

BASIC INSTALLATION:

METHOD 1:

(Attaching waterstop to smooth concrete):

1. Surface of the concrete must be clean, dry and free from any loose debris.
2. Paint concrete with appropriate adhesive (3M-2141, Bostik 1142, Scotch Grip 1357, 3M Spray Adhesive 92, 3M Spray Adhesive 77 or equal). Allow adhesive to become tacky - firmly press KBA-1510FP onto adhesive.
3. Place concrete without displacing or disturbing the position of the waterstop.

METHOD 2:

(Attaching waterstop to rough concrete with P-201. This method can be used on smooth concrete as well)

1. Surface of the concrete must be clean and free from standing water.
2. Apply small bead of Adeka Ultra Seal P-201 (1/16" X 3/8"). Use enough material to fill any void between the KBA-1510FP and the concrete surface.
3. Press KBA-1510FP into the P-201 while it is still in the paste state.
4. Use a wet tool or gloved finger to remove any excess P-201 (see details).
5. Allow sufficient curing time to adhere KBA-1510FP before placing concrete (time varies by temperature - approximately 4 hours at 68 -70 degrees F.).
6. Place concrete without disturbing or displacing the waterstop.

SEE INSTALLATION GUIDE FOR MORE DETAILED INSTRUCTIONS

HYDROSTATIC HEAD:

Pressure Test:

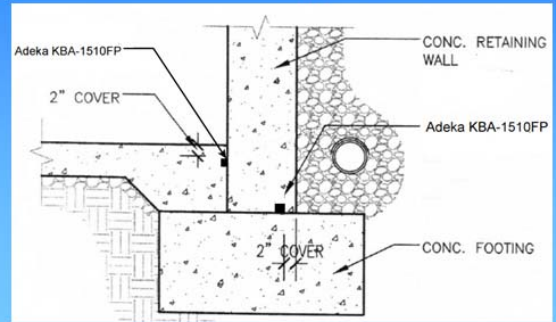
1. Hold pressure for 3 minutes for every 0.05 MPa (7.1 psi) increase.
2. Increase pressure in 0.05MPa increments until leak is detected.
3. Discontinue test for one week.
4. Resume test with above sequence - increasing pressure by 0.10 MPa (14.2 psi)

Results:

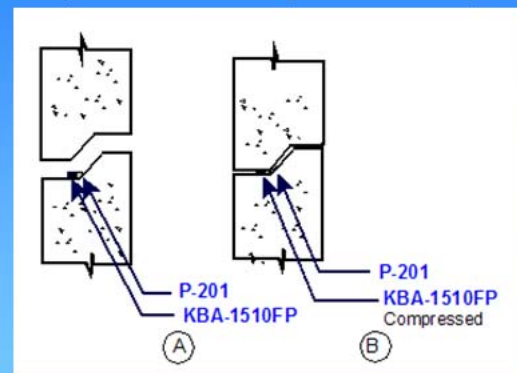
NO LEAKAGE at 0.20 MPa (28.4 psi - approximately 57 foot hydrostatic head).

WHERE TO USE ADEKA KBA-1510FP

Replace 4" flat PVC waterstop (wall / slab : slab / wall)



BETWEEN PRECAST SEGMENTS
(Less than 25 foot hydrostatic head)



KBA-1510FP waterstop is designed for:

- * EASY installation
- * non-moving joints
- * hydrostatic head of 25 feet or less
- * 4 inch or greater concrete walls and slabs
- * place on waterside of rebar for extra protection
- * areas of minimal concrete coverage (requires just 1 inch well consolidated 4300+psi concrete)

NOTE: The information contained herein is based on our present state of knowledge and is intended to provide general notes on Adeka Waterstops and their uses. Any recommendations or suggestions, which may be made, are without guarantee, since the conditions of use are beyond our control. Furthermore, nothing contained in this publication shall be construed as a recommendation for any use that may infringe patent rights. Readers are cautioned to satisfy themselves as to the suitability of such goods for the purposes intended prior to use

ADEKA ULTRASEAL® KBA-1510FP

ATTACHMENT PROCEDURE With Adeka P-201

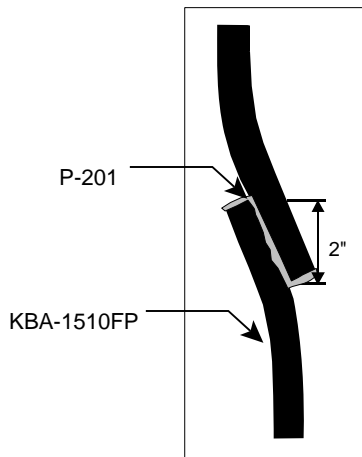
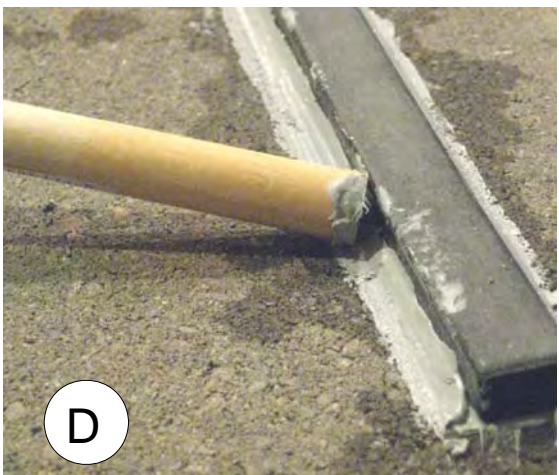
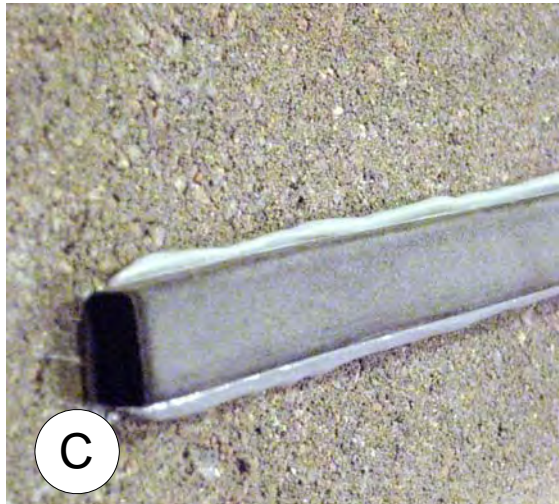
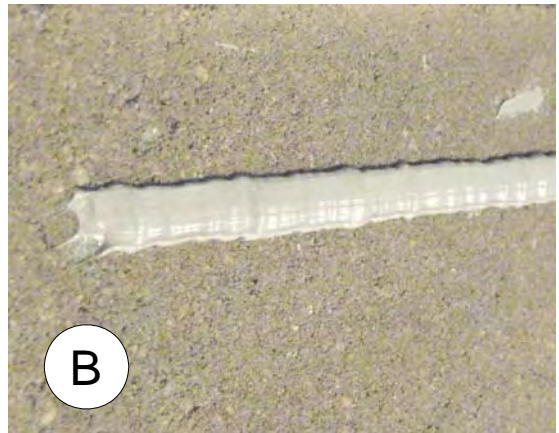
(A) Cut nozzle at the tip.

(B) Apply $\frac{1}{16}$ " X $\frac{3}{8}$ " bead. Apply thicker bead if the concrete is rough. There must be sufficient P-201 to fill any rough areas or voids. One cartridge of P-201 will cover approximately 40~50 feet at bead size of $\frac{1}{16}$ " X $\frac{3}{8}$ ".

(C) Press KBA-1510FP into the P-201 while it is still in the paste state. Note some P-201 will be forced out to the side.

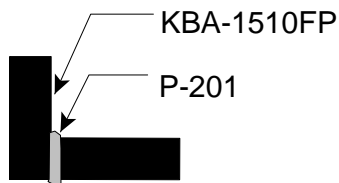
(D) Remove excess P-201. Use a $\frac{3}{8}$ " dowel dipped in water or similar tool to remove and smooth P-201.

Allow sufficient curing time before placing concrete (approximately 8-10 hours depending on temperature). Check adherence before pouring concrete. Allow more time if not firmly attached to the concrete..



Adhere ends with rubber adhesive or P-201

Side by Side Overlap Procedure



Corner Joint

FOR MORE INFORMATION CALL:
(800) 999-3959

ADEKA ULTRASEAL[®] KBA-1510FP

ATTACHMENT PROCEDURE With Adhesive and P-201

Surface of the concrete must be clean, dry and free from any loose debris.

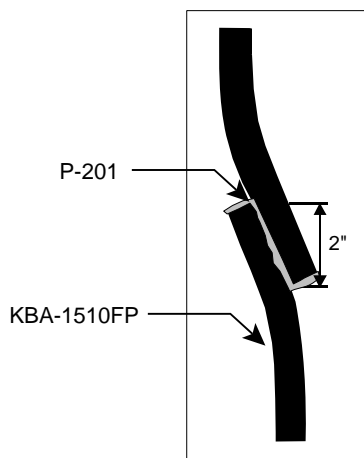
(A) Paint concrete with appropriate adhesive (3M-2141, Bostik 1142, Scotch Grip 1357, 3M Spray Adhesive or equal). Allow adhesive to become tacky - firmly press KBA-1510FP onto adhesive.

(B) If there are no gaps or voids between the KBA and the concrete, finish corner and splices as shown and proceed with placing concrete.

(C) If there are gaps or voids between the KBA and the concrete, apply a bead of P-201 on the water side of the KBA.

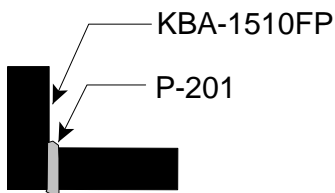
(D) Smooth and press the P-201 under the KBA with a 3/8" dowel dipped in water or similar tool.

Concrete can be placed immediately.



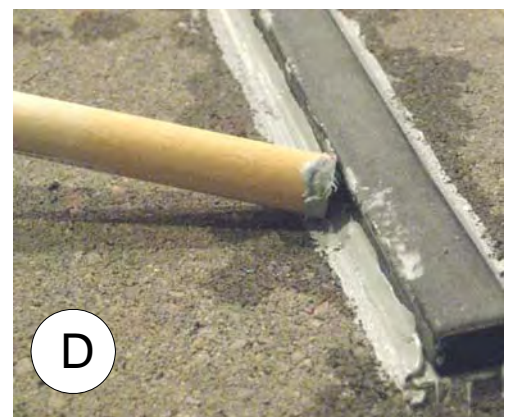
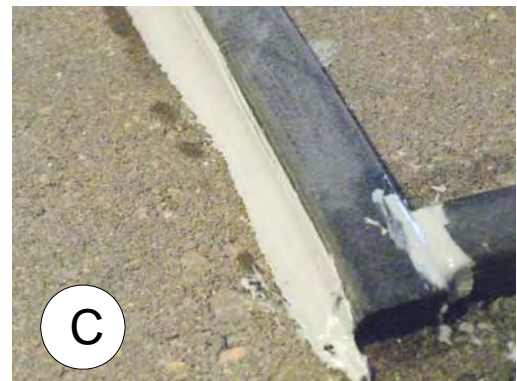
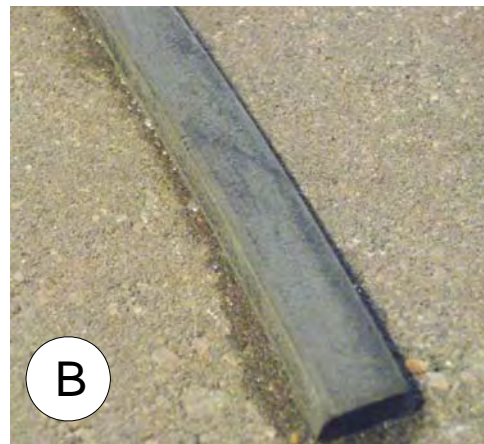
Adhere ends with rubber adhesive or P-201

Side by Side Overlap Procedure



Corner Joint

FOR MORE INFORMATION CALL:
(800) 999-3959



ADEKA WATERSTOP WITH BUTYL TAPE



Use butyl tape to attach MC-2005T or KBA-1510FP to a **dry and clean** substrate. The butyl tape comes in a 3/4" X 1/8" X 82 foot roll (1 roll per roll of KBA-1510FP).

Press the butyl strip onto the substrate and remove the release paper. Press the KBA-15010FP or MC-2005T (remove release paper from MC-2005T) onto the butyl tape. Press firmly.

Check for any gaps between the product and the substrate. If gaps are present, fill in using Adeka P-201 applied to the side of the strip. Use P-201 on corner joints and on side-by-side splice joints as usual. You can place concrete immediately - no waiting for curing time.

You can use the butyl tape to attach on vertical planes or overhead. Check to make sure the product is firmly adhered before placing concrete. Use the butyl tape to attach Adeka KBA-1510FP or MC-2005T for pipe penetrations. It can be used to attach around the block out and/or around the pipe.

Butyl tape can be used to attach KBA-1510FP on precast applications as well. MC-2005T is not suitable for precast. MC-2005T is designed for CIP use only.

For a leak proof application, always verify that the product is firmly attached and that P-201 is used on corner/splice joints before placing concrete. Make sure the concrete is well consolidated around the waterstop.

Contact:

800.999.3959 for more information

info@adeka.com
www.adeka.com