

IDEAL INSTALLATION OF AUS STRIP PRODUCTS MC / KBA / KM

The hydrophilic strip must have a tight interface with the concrete in all areas.

If there are gaps between the concrete and the AUS product or “looseness” between nails, concrete fines could be forced between the strip and the concrete. This may introduce a potential waterpath. Note Figure # 1.



Figure # 1

Prevent this possibility by using Adeka Ultra Seal P-201 or glue even when fastening with screws or nails (see data sheet for recommended glues). We highly recommend using P-201 under the strip products. Using P-201 eliminates the subjective determination of rough or smooth concrete.

Consider concrete rough when a profile is present that allows **any** concrete fines to penetrate between the strip material and the concrete. This includes holidays, bugholes etc.

Concrete is considered smooth when there is intimate contact between the strip material and the concrete over the entire area of the strip material.

INSTALLING ADEKA ULTRA SEAL STRIPS with ADEKA ULTRA SEAL P-201

Cut the nozzle at the very tip. If the concrete is rough, cut a larger opening. On smooth concrete (no profile) apply approximately 1/16" X 3/8" bead of P-201. One cartridge will cover approximately 40 feet at that bead size. Rough concrete will require more. There must be enough P-201 to fill any voids or profile when the strip is pressed into the P-201. Firmly press the strip into the P-201 while it is still in the paste state.



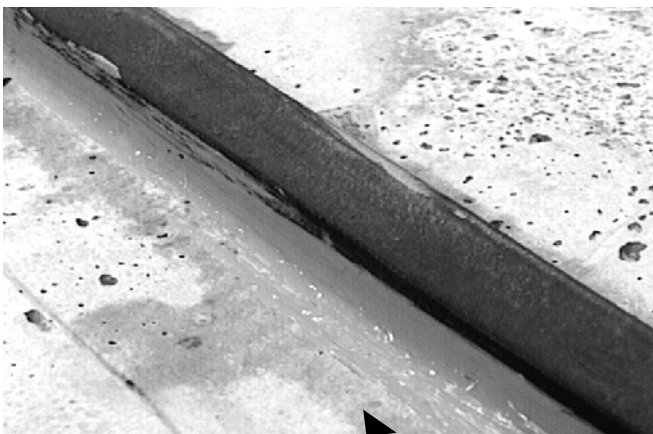
Cut the nozzle at the tip



1/16" X 3/8" bead of P-201



Press the strip firmly into the P-201-note "bubble" of P-201 on both sides.



Complete perfect waterstop seal by removing excess P-201.